



October, 2016

Lili Wu

- Established in Nov. 15th , 2004
- Paid-In Capital: NTD 317M (USD 10.4M)
- Number of Employees: 52
- Location:
 - Headquarter: No.15, Industry East 4th Rd., Hsinchu Science Park
 - ASPEED Technology (U.S.A) Inc.: 2290 N. First Street, Suite 300, San Jose, CA 95131, USA



Fabless-Lite Company

ASPEED

ASPEED

AST2530

P6R121.00S-2E

1422 TAN AO GP

**Server Management
SoC Solutions**

ASPEED

AST1525

P6R121.00S-2E

1422 TAN AO GP

**PC/AV Extension
SoC Solutions**



ASPEED

AST3200

P6R121.00S-2E

1422 TAN AO GP

**Desktop Virtualization
SoC Solutions**



Remarkable Highlights



Server SoC Provider



WW No. 1

2006-2014
CAGR



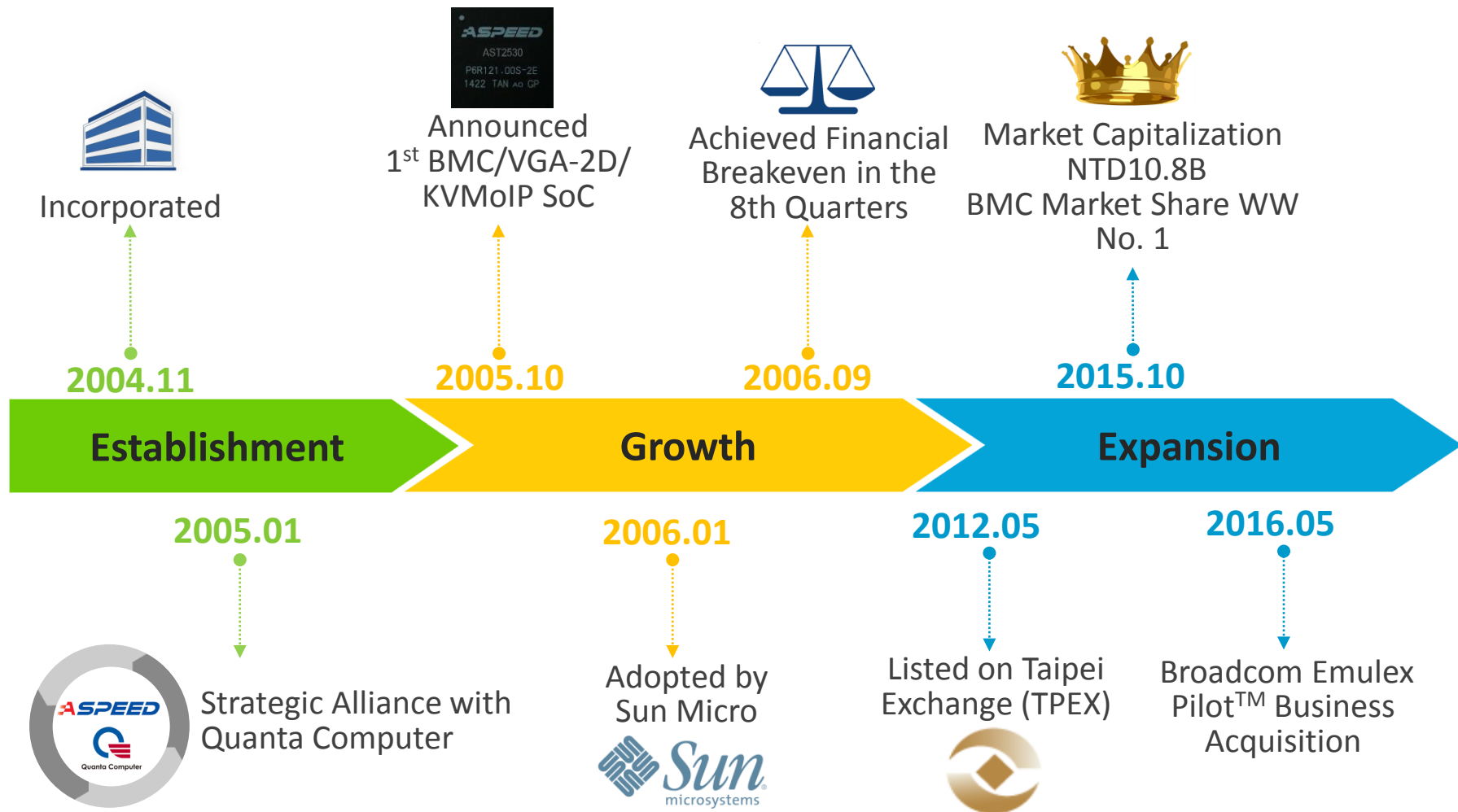
43%

8th Quarter

Financial Breakeven



Major Milestones



Product Lineup



AST1010
AST2200 / AST2150
AST2300 / AST1300 / AST1050
AST2400 / AST1400 / AST1250
AST2500 / AST2510 / AST2520 / AST2530

40nm LP Process
800MHz CPU
DDR4 SDRAM
PCIe Gen-II
ES: Jun 2014
PS: July 2015

Server
Management

AST1500 / AST1510
AST1520 / AST1525

40nm LP Process
4Kx2K Support
Multi-Screen TV Wall
1GHz CPU
DDR4 SDRAM
ES: Jun 2014
PS: July 2015

PC/AV
Extension

Desktop
Virtualization

AST3100
AST3200

40nm LP Process
Microsoft RemoteFX 8.0
Citrix HDX Ready
1GHz CPU
DDR4 SDRAM
PCIe Gen-II
ES: Jun 2014
PS: July 2015

ASPEED



Remote Server Management

Market Highlights – CPU vendor status

◇ARM based server CPU

- APM, Cavium
- APM is designing his next gen CPU w/ ASPEED
- Broadcom is designing demo board w/ ASPEED
- Qualcomm is designing demo board w/ ASPEED

◇IBM Open Power

- Power8
- Power9
- AST2600

◇Intel Tinsley

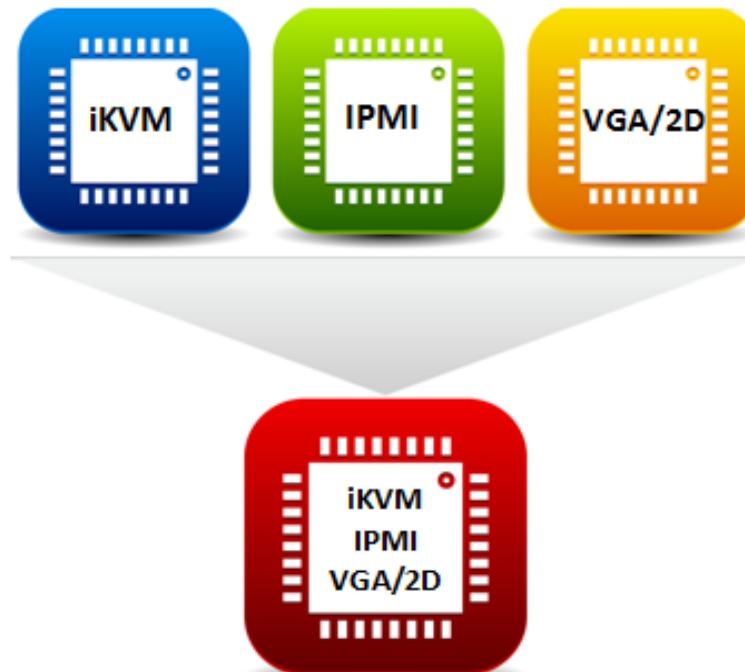
- Will discuss with Pilot team for next gen feature set

Broadcom Emulex Pilot™ Acquisition

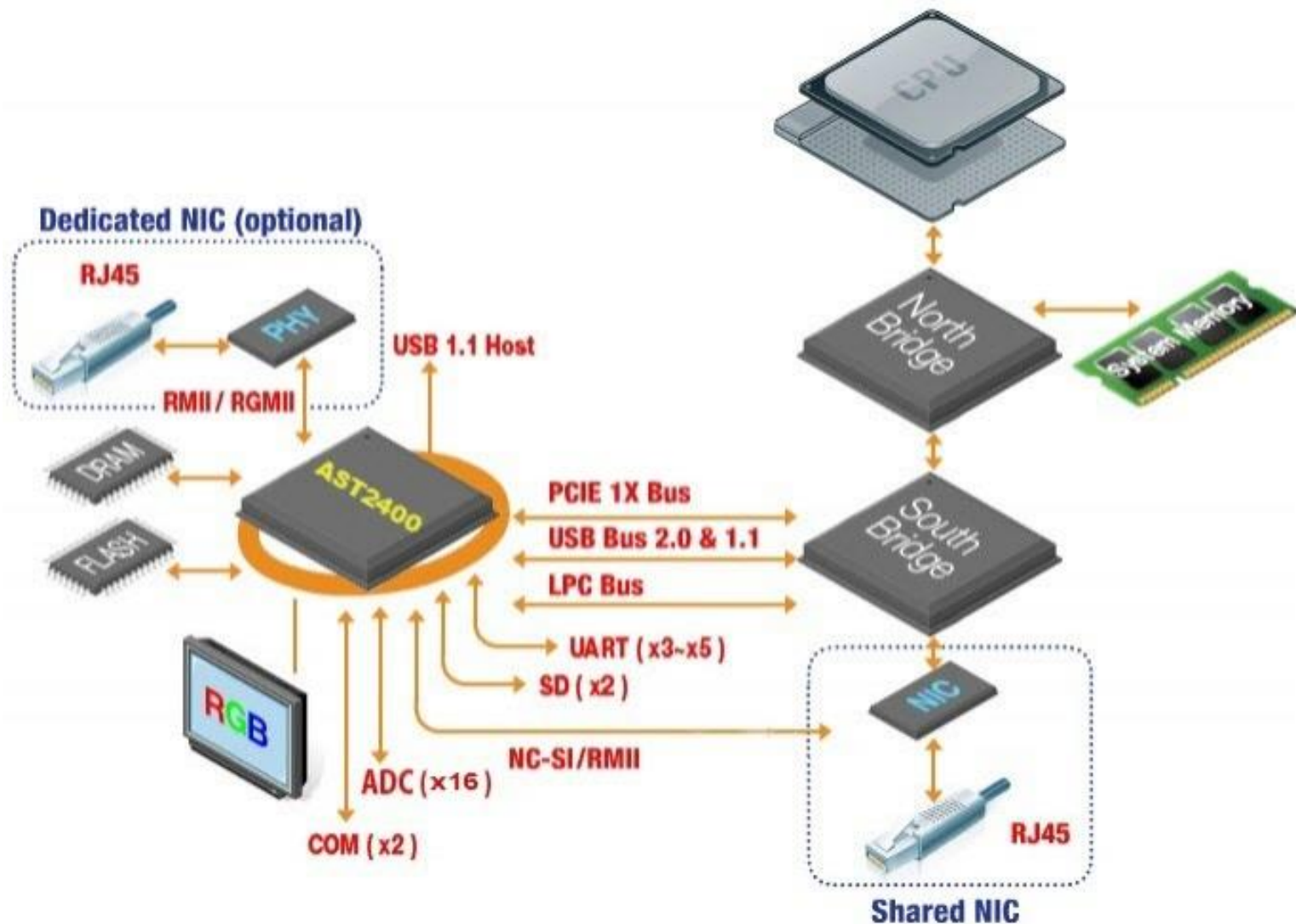
- Broadcom Emulex Pilot™ Business Acquisition
 - Purchase Price: US\$30,000,000; US\$11,386,192 paid in cash, others paid in ASPEED common stocks.
- Expected Closing Date: 2016/Q4 (Estimated)
- Market Potential: Emulex Pilot™ series Remote Server Management chip is widely acclaimed in the market
 - Push ASPEED to Brand Market
 - Expand Economies of scale
- Will Grow Faster after the Acquisition
 - Enable a faster entry to brand server market with Broadcom's existing customer base
 - Global Talents: Experienced Management and R&D team
 - Patent Portfolio
 - Reduce Price competition

Our Core Value

- Highly integration: 2D VGA / BMC / KVMoIP
- Dual Brand Strategy: Integrate ASPEED + Pilot
- Technology ownership
- Dual-IPMI: Maintain special spec , keep OEM/Branding variation



System Architecture



A SPEED



PC/AV Extension

Features & Benefits



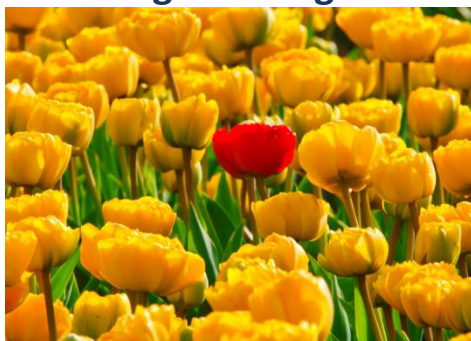
- UHD / FHD / HD over IP
- Controllable Extension over IP Matrix: Easy to control any size of video source input/output
- Real-time low latency
- Patented visually lossless compression algorithm to extend 4K2K HDTV Display up to 120M and longer over CAT5
- Total Cost Ownership (TCO): 1/3 of conventional system
- Compatible with all signage software & all video format
- Reduce total system power consumption
- Flexible Deployment



Advantages of UHD over IP

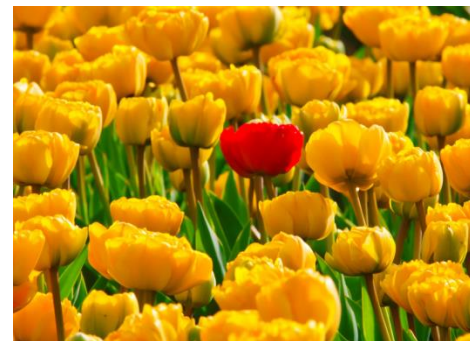
- Scalable, flexible, expanding capabilities even after years of installation
- Supports video walls from 2x2 to 16x16 easily
- Resolution: Use one CAT5E cable to extend 4K2K up to 120M and longer
- Enhance visually lossless compression
- Quick to deployment

Original Image



**Visually Lossless
Compression**

AST1520 Image



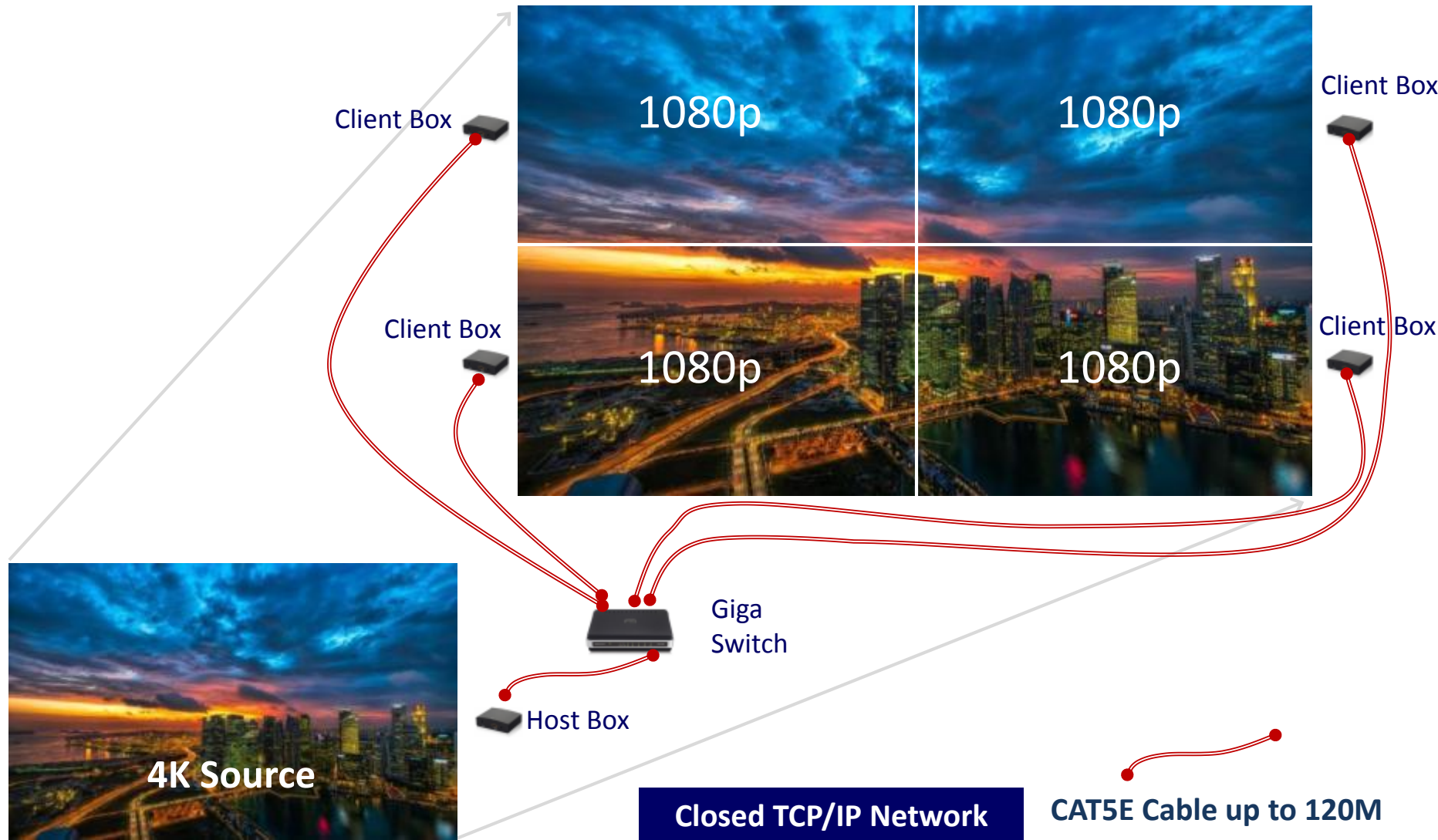
Lousy Compression

MJPEG Image



4K/2K HDTV Video Wall

ASPEED





Desktop Virtualization

Desktop Virtualization Segment *ASPEED*

- Traditional x86 base Virtualization / Thin Client
 - Dominated by Citrix / VMWare
 - Expensive, annual virtualization fee
 - Hard to replace
- Desktop-as-a-Service (DaaS)
 - Government, public area, school, military
- Desktop Re-direction



Virtual Desktop Infrastructure

- An individual physical server can be divided into multiple (ie. 10~20) isolated virtual desktop computers.
- An individual user is able to access to the server via network connection by adopting a Thin-Client computer or a Zero-Client computer.

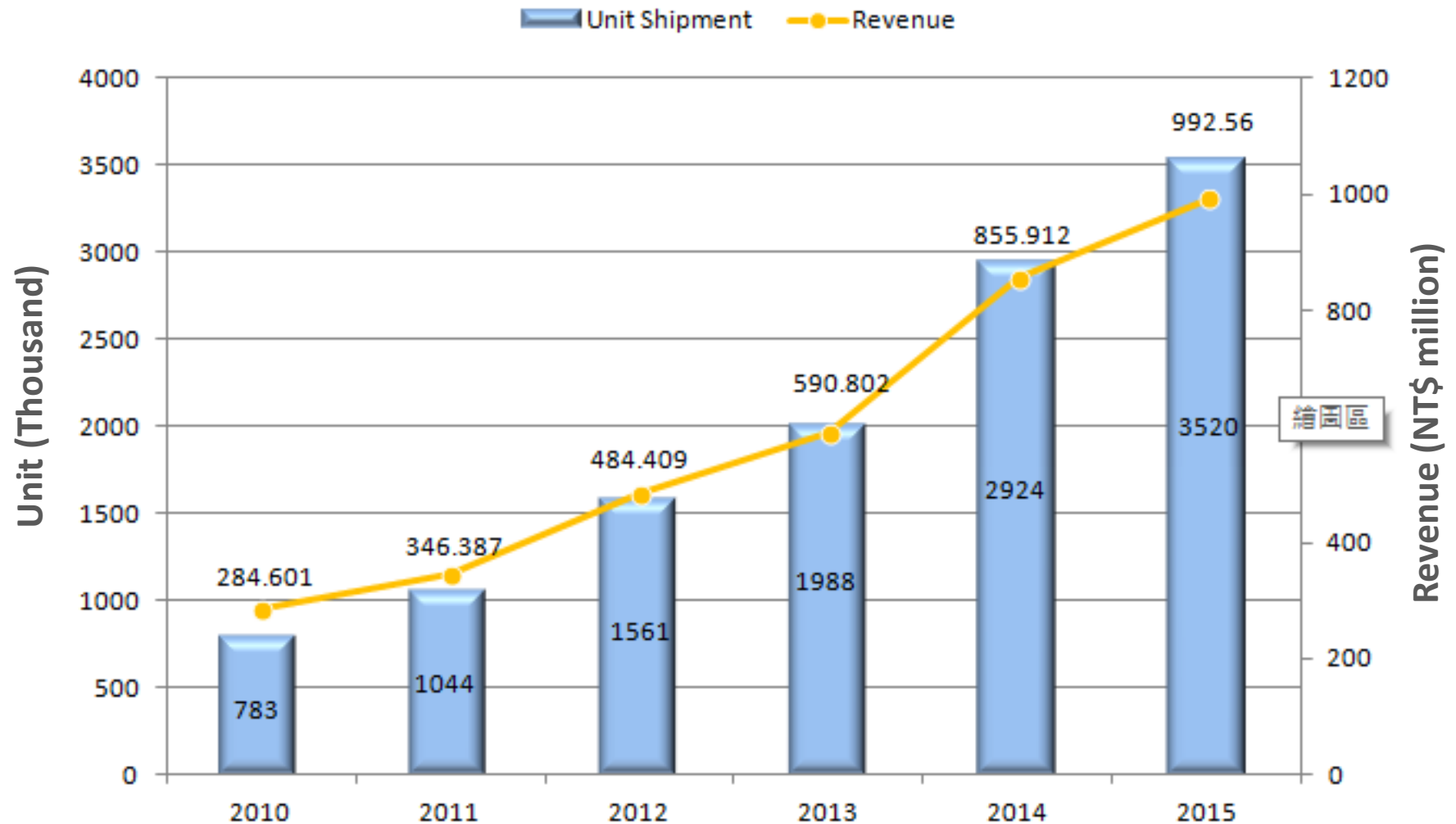


Benefits of Desktop Virtualization **ASPEED**

- Total cost ownership
 - MIS maintenance cost
 - H/W, desktop/laptop vs. small box
- Green environment
 - Lower power consumption, save the earth
 - Power consumption: AST3100/AST3200 is around 2W; entire box is under 15W (with 4 USB devices)
 - Desktop PC is generally over 100W
- Deployment
 - Easy to expand the servers, storages and remote desktop users by virtualization
 - Live-move virtual machine among the servers easily
- Enterprise security concern
 - Office worker
 - Specific task worker
 - Contractor offshore worker
 - Workers need to access his app/data from anywhere



Revenue & Shipment Growth



2016Q3 Sales & Profits



| Unit : NTD 1,000 | 2015Q3 | 2016Q3 | |
|----------------------|---------|---------|--------|
| | Amount | Amount | YoY |
| Sales Revenue | 285,603 | 382,626 | 33.97% |
| Net Operating Profit | 109,560 | 155,130 | 41.6% |
| Pre-Tax Profit | 133,810 | 141,046 | 5.4% |
| Net Income | 117,119 | 117,065 | -0.1% |
| EPS | 3.71 | 3.69 | -0.1% |

2016 Sales & Profits



| Unit : NTD 1,000 | 2015 Q1~Q3 | 2016 Q1~Q3 | YoY |
|----------------------|---------------|---------------|--------|
| | Amount | Amount | |
| Sales Revenue | 726,719 | 969,675 | 33.4% |
| Net Operating Profit | 275,170 | 384,395 | 39.7% |
| Pre-Tax Profit | 275,170 | 364,812 | 32.5% |
| Net Income | 259,236 | 297,583 | 14.8% |
| EPS | 8.23 | 9.40 | 14.21% |

Key Indices



| Unit : NTD 1,000 | 2015Q3 | 2016Q3 | |
|-------------------------|---------|---------|--------|
| | Amount | Amount | YoY |
| Cash | 836,005 | 996,580 | 19.20% |
| Account Receivable | 217,531 | 285,835 | 31.39% |
| Inventory | 42,296 | 61,905 | 46.35% |
| Debt | 120,000 | 195,000 | 62.5% |
| Shipment Qty (K/pcs) | 2,597 | 3,488 | 34.30% |



Thank you